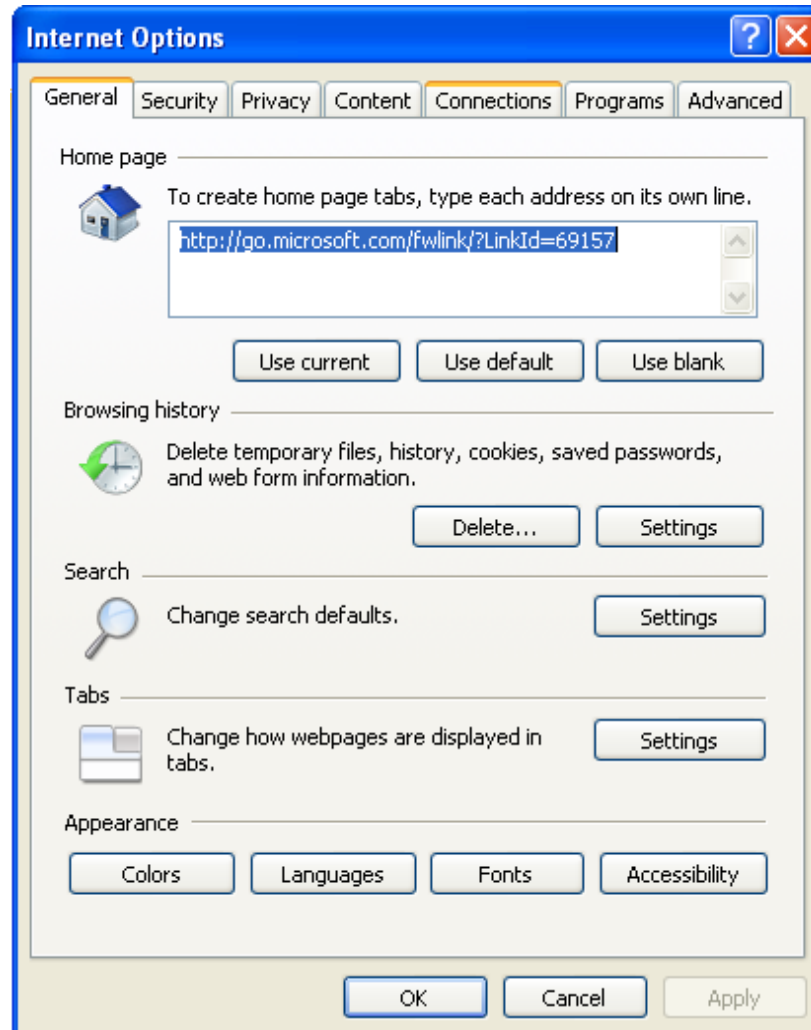
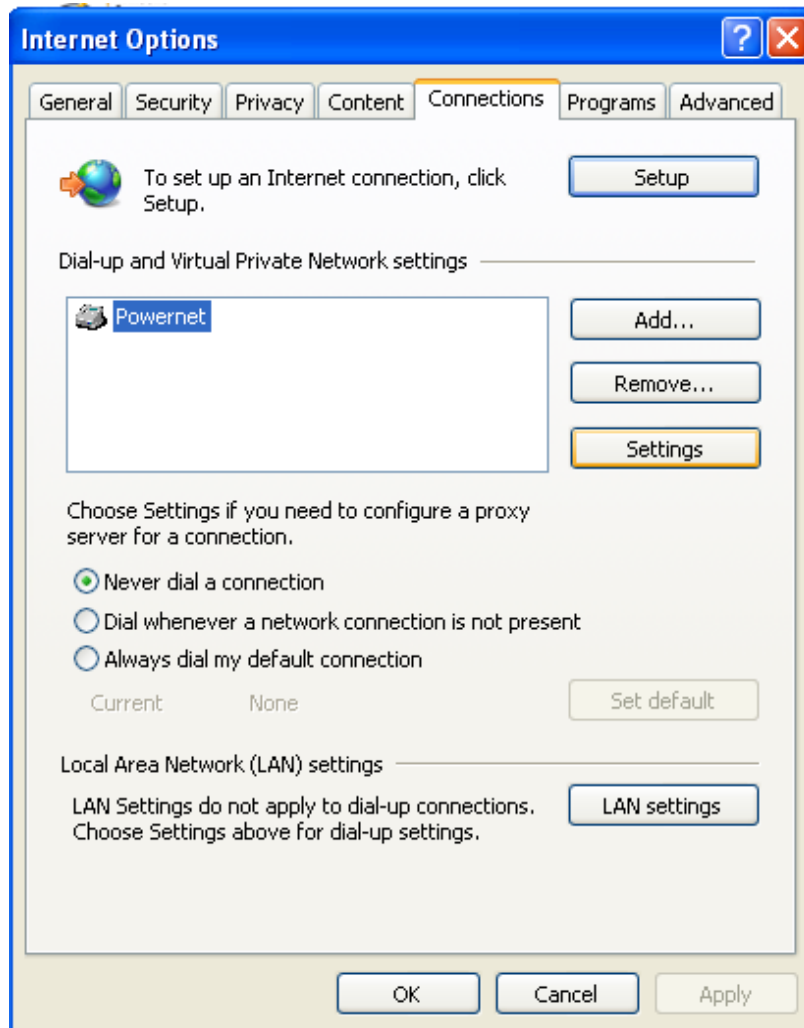


Transition Instructions for Dialup Customers

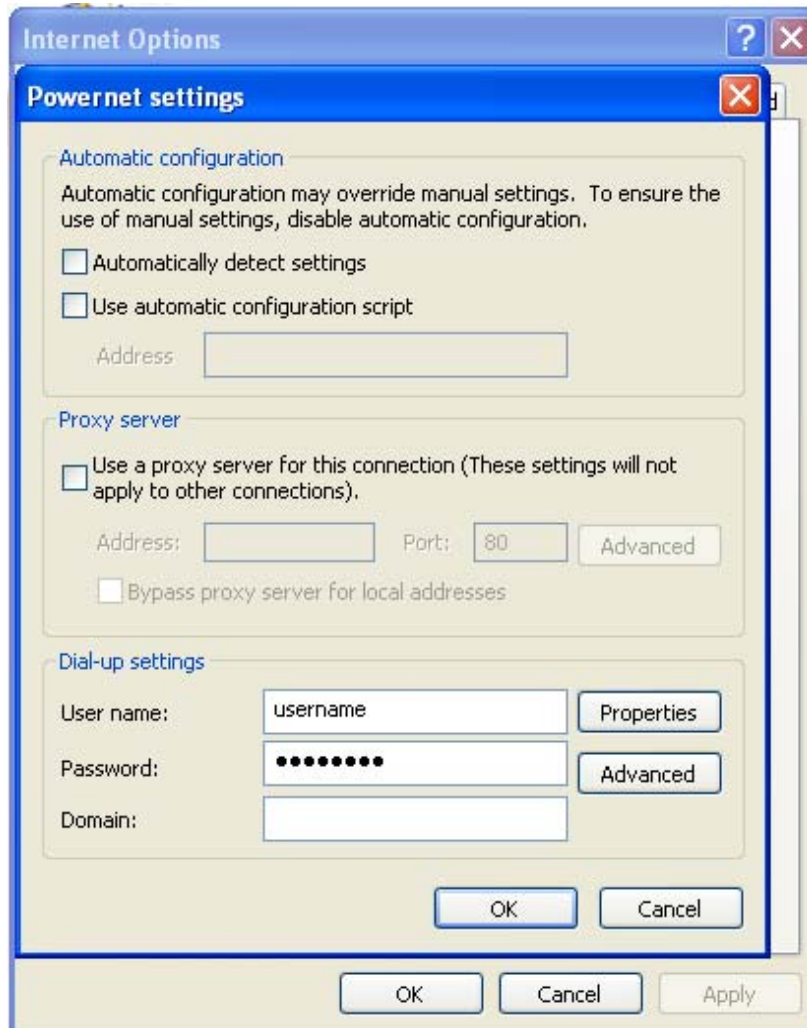
1. Open an Internet Explorer page and locate the **tools** option. Click on **tools** and select **Internet Options** from the drop down list. (The **tools** option is located in the upper right hand corner of Internet Explorer 7.0)
2. Locate and click the **Connections** tab at the top of the Internet Options pop up window.



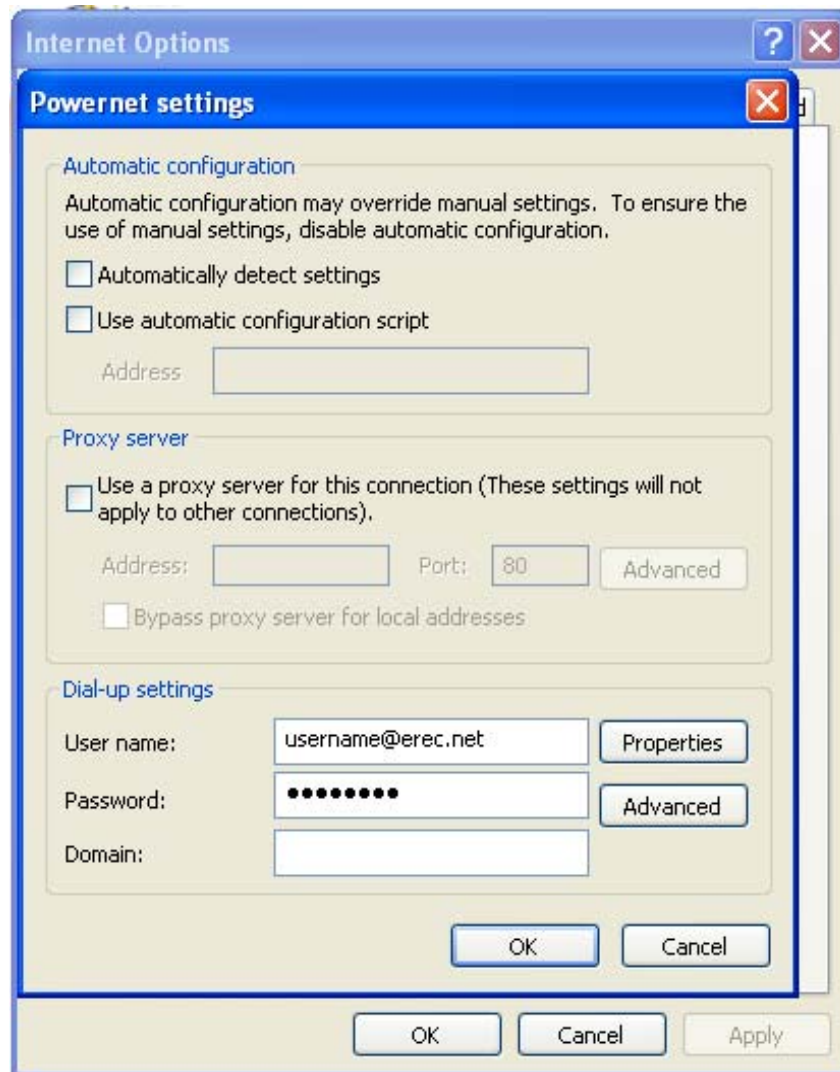
3. Highlight the default Dial-Up connection listed under the '**Dial-up and Virtual Private Network settings**' heading and press the '**Settings**' button located on the right side of the pop-up window.



4. At the bottom of the Dial-up settings pop up window, locate the field for user name in the section titled '**Dial-up Settings**'. Your username should currently be listed in the box.



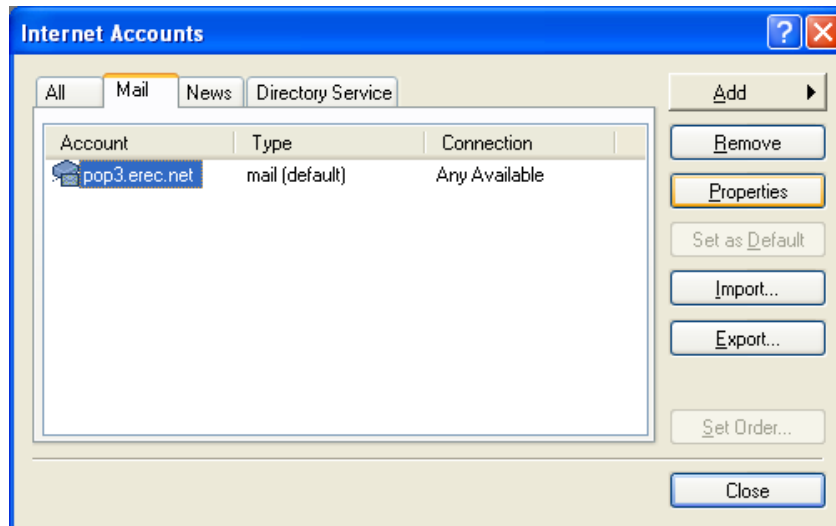
5. Change your user name to *username@erec.net* (where 'username' is your actual user name, i.e. change the username *abc* to *abc@erec.net*). Then click 'OK', then 'Apply', and then close Internet Explorer.



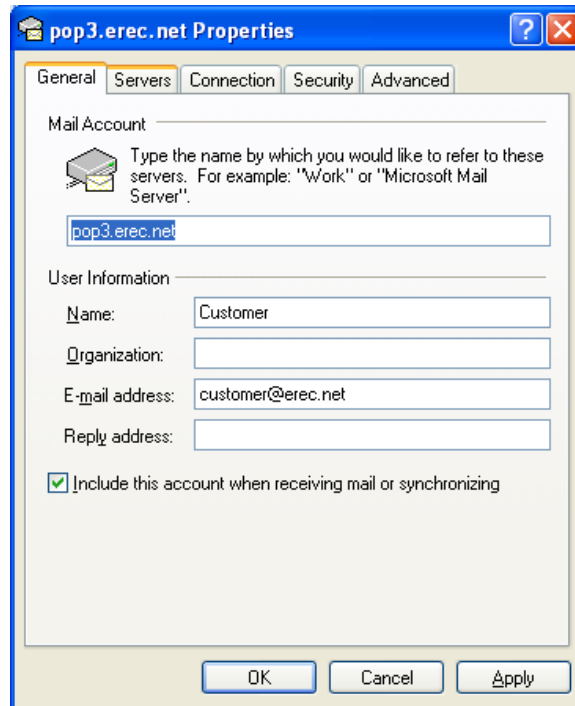
6. Open Outlook Express by double-clicking the **Outlook Express** icon on the desktop



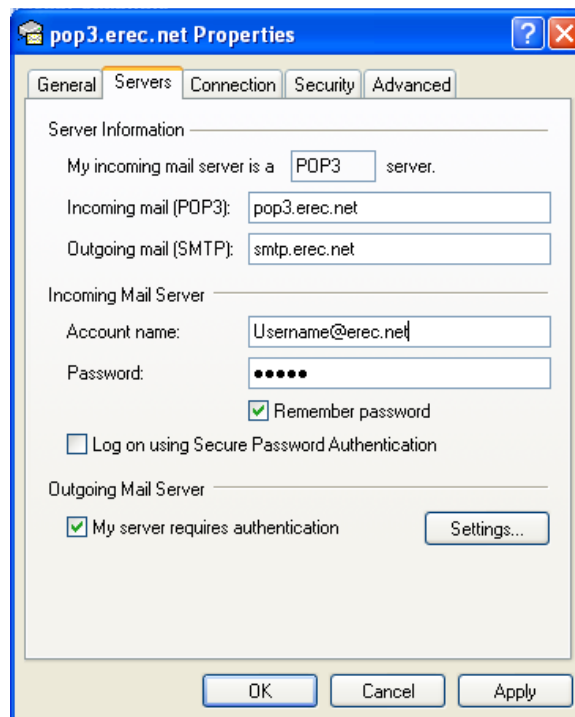
7. Click on **Tools**, then **Accounts**, to open the **Internet Accounts** window. In the **Internet Accounts** window, click on the **Mail** tab. The new account connection information displays in the **Account**, **Type**, and **Connection** columns. Click on the email domain address in the **Account** column to highlight it, then click on the **Properties** button to open the **pop3.erec.net Properties** window. (see graphic below)



8. On the **pop3.erec.net Properties** window click on the **Servers** tab display. (see graphic below)



9. On the **Servers** tab display in the **pop3.erec.net Properties** window, check the **My server requires authentication** checkbox, and then click on the **Settings** button to open the **Outgoing Mail Server** window. (see graphic below)



10. On the **Outgoing Mail Server** window, check on **Use same settings as my incoming mail server**. Then click ok to close the screen (see graphic below)



11. After the **pop3.erec.net Properties** screen appears, click **OK** to close the window. After the **Internet Accounts** window appears, click on the **OK** button to close the window